

Board Bylaws

1 – Electoral Wards

FIRST READING: 2020-02-05
SECOND READING: 2020-03-18
THIRD READING: 2020-05-27
Effective: 2020-05-27
Amended:

Appendix

Ministerial Orders #017/98 and #059/98
Jurisdiction and Ward Boundaries

1. Within the stipulations of Ministerial Orders 017/98 and 059/98 which resulted in the final establishment of Clearview Public Schools (effective September 1, 1998), the Board has decided to provide for the nomination and election of trustees within Clearview by wards and electoral subdivisions, comprising a total of six (6) wards and seven (7) elected trustees.
2. AND FURTHERMORE, in accordance with the Education Act s.76 (as at January, 2020), the Board hereby establishes under this bylaw the boundaries of the electoral wards as follows.

Each of the following is established as a ward:

2.1. Ward 1

Range 18, Townships 40 to 42
Range 19, Townships 39 to 42
Range 20, Townships 39 to 41
Range 21, Townships 39 to 40
Range 22, Township 39

2.2. Ward 2

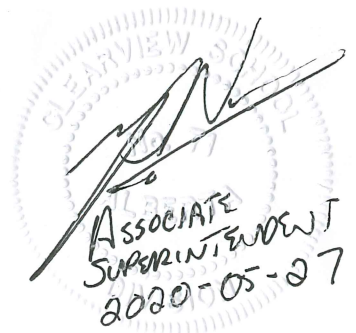
Range 19, Townships 34 to 38
Range 20, Townships 34 to 38
Range 21, Townships 34 to 38
Range 22, Townships 36 to 38

2.3. Ward 3

The Town of Stettler corporate limits.

2.4. Ward 4

Range 16, Townships 33 to 41
Range 17, Townships 33 to 42
Range 18, Townships 34 to 39



ASSOCIATE
SUPERINTENDENT
2020-05-27

Board Bylaws

1 – Electoral Wards

FIRST READING: 2020-02-05
SECOND READING: 2020-03-18
THIRD READING: 2020-05-27
Effective: 2020-05-27
Amended:

2.5. Ward 5

Range 12, Townships 38 and 39
Range 13, Townships 35 to 40
Range 14, Townships 35 to 40
Range 1S, Townships 34 to 40

2.6. Ward 6

Range 8, Township 38
Range 9, Townships 35 to 39
Range 10, Townships 35 to 40
Range 11, Townships 35 to 39
Range 12, Townships 35 to 37

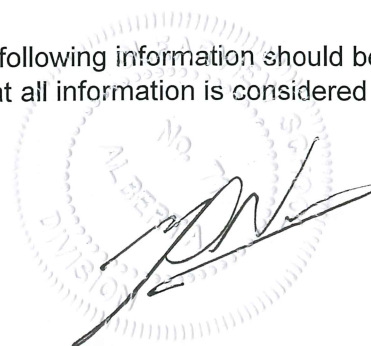
3. The number of trustees to be elected to the Board shall be seven (7) and the number of trustees to be elected to each ward shall be as follows:

- 3.1. One (1) trustee shall be elected from Ward 1
- 3.2. One (1) trustee shall be elected from Ward 2
- 3.3. Two (2) trustees shall be elected from Ward 3
- 3.4. One (1) trustee shall be elected from Ward 4
- 3.5. One (1) trustee shall be elected from Ward 5
- 3.6. One (1) trustee shall be elected from Ward 6

4. Changes to Electoral Wards

4.1. Electoral Wards and Electoral Ward Representation must, if practicable, provide that the number of Trustee(s) to be elected in each ward is in the same proportion to the total number of Trustees of the Board as the population of the ward is to the population of Clearview.

4.2. To proceed with a ward boundary review, the following information should be considered in the determination of changes, if any. Note that all information is considered as a whole and not individually determinate.



Board Bylaws

1 – Electoral Wards

FIRST READING: 2020-02-05
SECOND READING: 2020-03-18
THIRD READING: 2020-05-27
Effective: 2020-05-27
Amended:

-
- 4.2.1. Gather census data from our local municipalities for population distribution, or if possible Statistics Canada;
 - 4.2.2. Electoral wards boundaries of our municipal communities;
 - 4.2.3. Geographical features - wherever possible, ward boundaries will be readily identifiable to the public by using both natural and human-made geographical features including significant topography, municipalities, and major streets.
 - 4.2.4. Least number of changes - to provide stability in elected representation, ward boundary proposals should include the fewest changes possible to achieve the desired results.
 - 4.2.5. Conduct public consultation on the information provided to develop ward scenarios, including consultations with school councils;
 - 4.2.6. Consult with the public on the proposed changes consisting of a public meeting(s) to allow the community an opportunity to provide input regarding the proposed recommendation(s);
- 4.3. The Secretary to the Board shall conduct the process for information gathering and consultation, and provide all relevant information to the Board for consideration including recommendations.
-



APPENDIX
MINISTERIAL ORDER (# 059/98)

**The Clearview School Division No. 71
Establishment Amendment Order**

- 1 Ministerial Order No. 017/98 dated June 24, 1998 is amended by this Order.

- 2 Section 2 is repealed and the following is substituted:
 - 2 Pursuant to Sections 195 and 217 of the School Act, The Clearview School Division No. 71 (the "School Division") is established and the members of the board are a corporation under the name of The Board of Trustees of Clearview School Division No. 71 (the "Board"). The Clearview School Division No. 71 shall be comprised of the following lands:

All lands lying West of the 4th Meridian, including lands located within the corporate limits of the Towns, Villages and Summer Villages.

Range 8, Township 38
Sections 1 to 12 inclusive; Sections 15 to 22 inclusive.

Range 9, Township 35
Sections 7 and 8, Sections 17 to 20 inclusive; Sections 29 to 32 inclusive.

Range 9, Township 36
Sections 5 to 8 inclusive; Sections 17 to 20 inclusive; Section 29 to 32 inclusive.

Range 9, Township 37
Sections 3 to 10 inclusive; Sections 13 to 36 inclusive.

Range 9, Townships 38 and 39
Sections 1 to 36 inclusive.

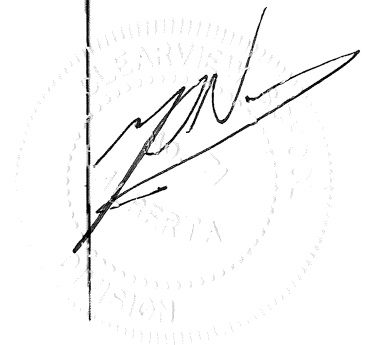
Range 10, Townships 35 to 38 inclusive
Sections 1 to 36 inclusive.

Range 10, Townships 39 and 40
That portions lying South of the Battle River.

Range 11, Townships 35 to 38 inclusive
Sections 1 to 36 inclusive.

Range 11, Township 39
That portion lying South of the Battle River.

Range 12, Townships 35 to 38 inclusive
Sections 1 to 36 inclusive.



APPENDIX

MINISTERIAL ORDER (# 059/98)

Range 12, Townships 39

That portion lying South of the Battle River.

Range 13, Townships 35 to 38 inclusive

Sections 1 to 36 inclusive.

Range 13, Townships 39 and 40

Those portions lying South of the Battle River.

Range 14, Townships 35 and 36

Those portions not included in the water of Sullivan Lake.

Range 14, Townships 37 to 39 inclusive

Sections 1 to 36 inclusive.

Range 14, Township 40

Those portions lying South of the Battle River.

Range 15, Townships 34 to 36 inclusive

That portion not included in the waters of Sullivan Lake.

Range 15, Townships 37 to 39 inclusive

Sections 1 to 36 inclusive.

Range 15, Township 40

That portion lying South of the Battle River.

Range 16, Township 33

Sections 26 to 35 inclusive; those portions of Sections 30 and 31 not included in the waters of Farrell Lake.

Range 16, Townships 34 to 39 inclusive

Sections 1 to 36 inclusive.

Range 16, Townships 40 and 41

Those portions lying South of the Battle River.

Range 17, Township 33

Those portions of Sections 32 to 36 inclusive not included in the water of Farrell Lake.

Range 17, Township 34 to 40 inclusive

Sections 1 to 36 inclusive.

Range 17, Townships 41 and 42

Those portions lying South and West of the Battle River.

Range 18, Townships 34 to 42 inclusive

Sections 1 to 36 inclusive.

Range 19, Townships 34 to 41 inclusive

Sections 1 to 36 inclusive.

APPENDIX

MINISTERIAL ORDER (# 059/98)

Range 19, Township 42

Sections 1 to 3 inclusive; Sections 10 to 12 inclusive; Sections 13 to 15 inclusive; Sections 22 to 24 inclusive; East halves of 4, 9, 16 and 21.

Range 20, Township 34

Sections 13 to 36 inclusive.

Range 20, Townships 35 to 39 inclusive

Sections 1 to 36 inclusive.

Range 20, Township 40

That portion not included in the waters of Buffalo Lake.

Range 20, Township 41

Section 1; Sections 12 to 14 inclusive; Sections 23 to 26 inclusive; Sections 35 and 36; those portions of Sections 2, 9, 10, 11, 15, 22 and 27 not included in the water of Buffalo Lake.

Range 21, Township 34

Sections 21 to 26 inclusive; Sections 35 and 36, those portions of Sections 19, 20, 27, 28 and 34 lying East of the Red Deer River.

Range 21, Townships 35 and 36

Those portions lying East of the Red Deer River.

Range 21, Townships 37 to 39 inclusive

Sections 1 to 36 inclusive.

Range 21, Township 40

Sections 1 to 5 inclusive; East half and Southwest quarter of Section 6; Southeast quarter of Section 7; that portion of the South half of Section 8 not in Buffalo Lake; those portions of Sections 9, 10, 15, 23, 24 and 25 not included in the water of Buffalo Lake.

Range 22, Townships 36 to 38 inclusive

Those portions lying East of the Red Deer River.

Range 22, Township 39

Sections 1 and 2; Sections 11 to 14 inclusive; Sections 23 and 24.

The image shows the official seal of the Government of Alberta, featuring a circular design with the text 'GOVERNMENT OF ALBERTA' and 'ALBERTA' in the center. Overlaid on the seal is a handwritten signature in black ink.

DIV 71-0
cc: RD 24-0

GOVERNMENT OF ALBERTA
DEPARTMENT OF EDUCATION

MINISTERIAL ORDER (# 017/98)

I, Gary G. Mar, Q.C., Minister of Education, pursuant to Sections 195, 217, 218 and 208.8 of the School Act, make the Order in the attached Appendix, being The Clearview School Division No. 71 Establishment Order.

DATED at Edmonton, Alberta JUNE 24, 1998.

Gary G. Mar

MINISTER OF EDUCATION



APPENDIX

MINISTERIAL ORDER (# 017/98)

The Clearview School Division No. 71

Establishment Order

- 1 Pursuant to Sections 195 and 208.8 of the School Act, By-law No. 1-97 requesting the conversion of the regional division to a school division, passed January 8, 1998 by The Board of Trustees of Clearview Regional Division No. 24 is approved.

- 2 Pursuant to Sections 195 and 217 of the School Act, The Clearview School Division No. 71 (the "School Division") is established and the members of the board are a corporation under the name of The Board of Trustees of Clearview School Division No. 71 (the "Board"). The Clearview School Division No. 71 shall be comprised of the following lands:

All lands lying West of the 4th Meridian, including lands located within the corporate limits of the Towns, Villages and Summer Villages

Range 8, Township 38

Sections 1 to 15 inclusive; Sections 19 to 22 inclusive.

Range 9, Township 35

Sections 7 and 8; Sections 17 to 20 inclusive; Sections 29 to 32 inclusive.

Range 9, Township 36

Sections 7 and 8; Sections 17 to 20 inclusive; Sections 29 to 32 inclusive.

Range 9, Township 37

Sections 4 to 10 inclusive; Sections 13 to 36 inclusive.

Range 9, Townships 38 and 39.

Range 10, Townships 35 to 39 inclusive and that portion of Township 40 lying South of the Battle River.

Range 11, Townships 35 to 38 inclusive and that portion of Township 39 lying South of the Battle River

Range 12, Townships 35 to 38 inclusive and that portion of Township 39 lying South of the Battle River

Range 13, Townships 35 to 38 inclusive and that portion of Townships 39 and 40 lying South of the Battle River

That portion of Range 14, Range 35 not included in the waters of Sullivan Lake.

Range 14, Townships 36 to 39 inclusive and that portion of Township 40 lying South of the Battle River.

Range 15, that portion of Townships 34 to 36 inclusive not included in the waters of Sullivan Lake.



APPENDIX

MINISTERIAL ORDER (# 017/98)

Range 15, Townships 37 to 39 inclusive and that portion of Township 40 lying South of the Battle River.

Range 16, Township 33

Sections 25 to 29 inclusive; Sections 32 to 36 inclusive; those portions of Sections 30 and 31 not included in the waters of Farrell Lake.

Range 16, Townships 34 to 39 inclusive; those portions of Townships 40 and 41 lying South of the Battle River.

Range 17, Township 33

Those portions of Sections 1 to 4 inclusive not included in the waters of Farrell lake.

Range 17, Townships 34 to 40 inclusive and those portions of Townships 41 and 42 lying South and East of the Battle River.

Range 18, Townships 34 to 42 inclusive.

Range 19, Townships 34 to 41 inclusive.

Range 19, Township 42

Sections 1 to 4 inclusive; Sections 9 to 16 inclusive; Sections 21 to 24 inclusive.

Range 20, Township 34

Sections 13 to 36 inclusive.

Range 20, Townships 35 to 39 inclusive and that portion of Sections 40 and 41 not included in the waters of Buffalo Lake.

Range 21, Township 34

Sections 21 to 27 inclusive; Sections 34 to 36 inclusive; those portions of Sections 19, 27, 28 and 33 lying East of the Red Deer River.

Range 21, that portion of Townships 35 and 36 lying East of the Red Deer River.

Range 21, Townships 37 to 39 inclusive.

Range 21, Township 40

Sections 1 and 2; those portions of Sections 3, 10, 11 and 12 not included in the waters of Buffalo Lake.

Range 22, those portions of Townships 36 to 38 inclusive lying East of the Red Deer River.

Range 22, Township 39

Sections 1 and 2; Sections 11 to 14 inclusive; Sections 23 and 24.



APPENDIX

MINISTERIAL ORDER (# 017/98)

3 Pursuant to Section 195 of the School Act, the School Division is divided into six (6) wards:

(a) **Ward 1** shall comprise of the following lands:

Those lands situated within the boundaries of Clearview Regional Division No. 24 excluding those lands contained within the corporate limits of the Town of Stettler, all being West of the 4th Meridian.

Range 18, Townships 40 to 42

Range 19, Townships 39 to 42

Range 20, Townships 39 to 41

Range 21, Townships 39 to 40

Range 22, Township 39

(b) **Ward 2** shall comprise of the following lands:

Those lands situated within the boundaries of Clearview Regional Division No. 24 excluding those lands contained within the corporate limits of the Town of Stettler, all being West of the 4th Meridian.

Range 19, Townships 34 to 38

Range 20, Townships 34 to 38

Range 21, Townships 34 to 38

Range 22, Townships 37 to 38

(c) **Ward 3** shall comprise of the following lands:

The Town of Stettler corporate limits.

(d) **Ward 4** shall comprise of the following lands:

Those lands contained within the boundaries of Clearview Regional Division No. 24, all being West of the 4th Meridian.

Range 16, Townships 33 to 41

Range 17, Townships 34 to 42

Range 18, Townships 34 to 39



APPENDIX

MINISTERIAL ORDER (# 017/98)

(e) **Ward 5** shall comprise of the following lands:

Those lands contained within the boundaries of Clearview Regional Division No. 24, all being West of the 4th Meridian.

Range 12, Townships 38 and 39

Range 13, Townships 35 to 40

Range 14, Townships 35 to 40

Range 15, Townships 34 to 40

(f) **Ward 6** shall comprise of the following lands:

Those lands contained within the boundaries of Clearview Regional Division No. 24, all being West of the 4th Meridian.

Range 8, Township 38

Range 9, Townships 35 to 39

Range 10, Townships 35 to 40

Range 11, Townships 35 to 39

Range 12, Townships 35 to 37

4 Pursuant to Section 218 of the School Act, the number of trustees to be elected to the Board shall be seven (7) and the number of trustees to be elected to each ward shall be as follows:

- a) One (1) trustee shall be elected from Ward 1
- b) One (1) trustee shall be elected from Ward 2
- c) Two (2) trustees shall be elected from Ward 3
- d) One (1) trustee shall be elected from Ward 4
- e) One (1) trustee shall be elected from Ward 5
- f) One (1) trustee shall be elected from Ward 6

5 Pursuant to Section 208.8 of the School Act, the following individuals are appointed as trustees of the Board and shall hold office until the first organizational meeting of the Board held after the first general election after the School Division is established:

- a) Anne E. Nixon
- b) Ruth Marshall
- c) William P. Baergen
- d) Thelma A. Davits
- e) Brian Heidecker
- f) Dennis Burnside
- g) George Klaus



APPENDIX

MINISTERIAL ORDER (# 017/98)

- 6 The first meeting of the Board shall be held within four (4) weeks following the date of the local authorities election.
- 7 Pursuant to Section 208.8(3) of the **School Act** the Board of Trustees of Clearview Regional Division No. 24 is dissolved on the date the establishment of the School Division and all assets and liabilities of the Board of Trustees of Clearview Regional Division No. 24 are transferred to the Board of Trustees of Clearview School Division No. 71.
- 8 Pursuant to Section 208.8(3) of the **School Act**, all persons employed by the Board of Trustees of Clearview Regional Division No. 24 on the date of the establishment of the School Division are transferred to and become employees of the Board of Trustees of Clearview School Division No. 71.
- 9 The nomination and election of trustees shall be conducted in accordance with clauses 3 and 4 and shall be effective with the 1998 local authorities election.
- 10 This Order shall come into effect on September 1, 1998.



A handwritten signature in black ink is written over a circular stamp. The stamp contains the text "BOARD OF TRUSTEES OF CLEARVIEW SCHOOL DIVISION NO. 71" around the perimeter. The signature is a stylized, cursive name.



CLEARVIEW REGIONAL DIVISION #24

5402 - 50 Avenue
Stettler, Alberta T0C 2L2
Tel. (403) 742-3331
Fax. (403) 742-1388

January 12, 1998

School Business, School Finance and Facilities Branch
6th Floor, West Devonian Building
11160 Jasper Avenue, Box 5
EDMONTON, Alberta
T5K 0L2

ATTENTION: STEVE BEMOUNT, ASSISTANT DIRECTOR

Dear Steve:

RE: Electoral Boundaries

Enclosed is By-Law No. 1/97 which has received 3rd reading and has been approved by the Board of Trustees.

I believe this By-Law needs to have Ministerial approval.

Please take care of this for us. If there are any problems or questions, please call.

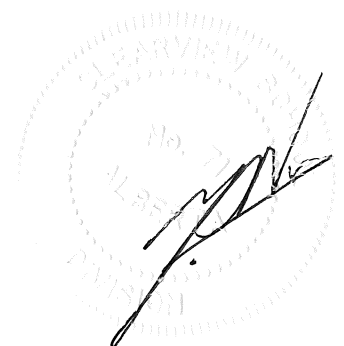
Yours sincerely,


Robert Dick
Secretary Treasurer

RD/mw
Enc.

cc: Gillian M. Bushrod, Superintendent

G:\WPDOCS\BOB\BEMOUNT.STE



JAN 13 1998

BY-LAW NO. 1/97

A By-law of the Clearview Regional Division #24.

WHEREAS Section 208.8 of the *School Act* provides that a board may request the Minister of Education to convert a regional division to a school division;

AND WHEREAS Section 195 of the *School Act* provides that the Minister of Education may by order establish a school division;

AND WHEREAS the Order of the Minister shall give the school division a name and a number and divide the division into no less than three wards.

AND WHEREAS the *School Act* Section 225 allows the Division to establish electoral subdivisions or wards in order to provide representation by population.

AND WHEREAS The Board of Trustees is presently comprised of seven (7) Trustees.

AND WHEREAS the present electoral subdivisions do not provide equal representation by population nor any representation for summer villages.

NOW THEREFORE The Board of Trustees of the Clearview Regional Division #24 requests the Minister to establish a school division as follows:

1. The Clearview Regional Division #24 shall be known as The Clearview School Division No. _____.
2. Seven (7) members shall be elected to The Board of Trustees of Clearview School Division.
3. The Clearview School Division shall be divided into six (6) wards.
4. The nomination and election of trustees shall be as follows:

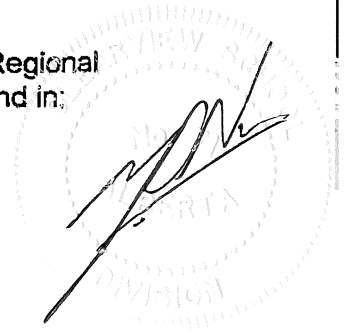
Ward 1

- Those lands situated within the boundaries of the Clearview Regional Division #24, excluding the Town of Stettler corporate limits, and in:

Range 22, Township 39
Range 21, Townships 39 to 40
Range 20, Townships 39 to 41
Range 19, Townships 39 to 42
Range 18, Townships 40 to 42

Population 2198, 1 Trustee;

.../2



-S

Ward 2

- Those lands situated within the boundaries of the Clearview Regional Division #24, excluding the Town of Stettler corporate limits, and in:
Range 22, Townships 37 to 38
Ranges 19 to 21, Townships 34 to 38

Population 2034, 1 Trustee;

Ward 3

- The Town of Stettler corporate limits, Population 5220, 2 Trustees;

Ward 4

- Those lands situated within the boundaries of the Clearview Regional Division #24 and in:
Range 18, Townships 34 to 39
Range 17, Townships 34 to 42
Range 16, Townships 33 to 41

Population 2094, 1 Trustee;

Ward 5

- Those lands situated within the boundaries of the Clearview Regional Division #24 and in:
Range 15, Townships 34 to 40
Ranges 14 and 13, Townships 35 to 40
Range 12, Townships 38 and 39

Population 2185, 1 Trustee; and

Ward 6

- Those lands situated within the boundaries of the Clearview Regional Division #24 and in:
Range 12, Townships 35 to 37
Range 11, Townships 35 to 39
Range 10, Townships 35 to 40
Range 9, Townships 35 to 39
Range 8, Township 38

Population 2211, 1 Trustee.



A handwritten mark or signature at the bottom right of the page.

This By-law shall take effect in time to be used for the election in October, 1998.

READ A FIRST TIME this 11th day of December, 1997.

Chene Nixon
Chairperson

Robert Dault
Secretary Treasurer

READ A SECOND TIME this 11th day of December, 1997.

Chene Nixon
Chairperson

Robert Dault
Secretary Treasurer

READ A THIRD TIME this 8th day of January, 1998.

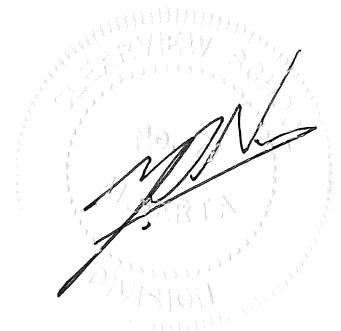
Chene Nixon
Chairperson

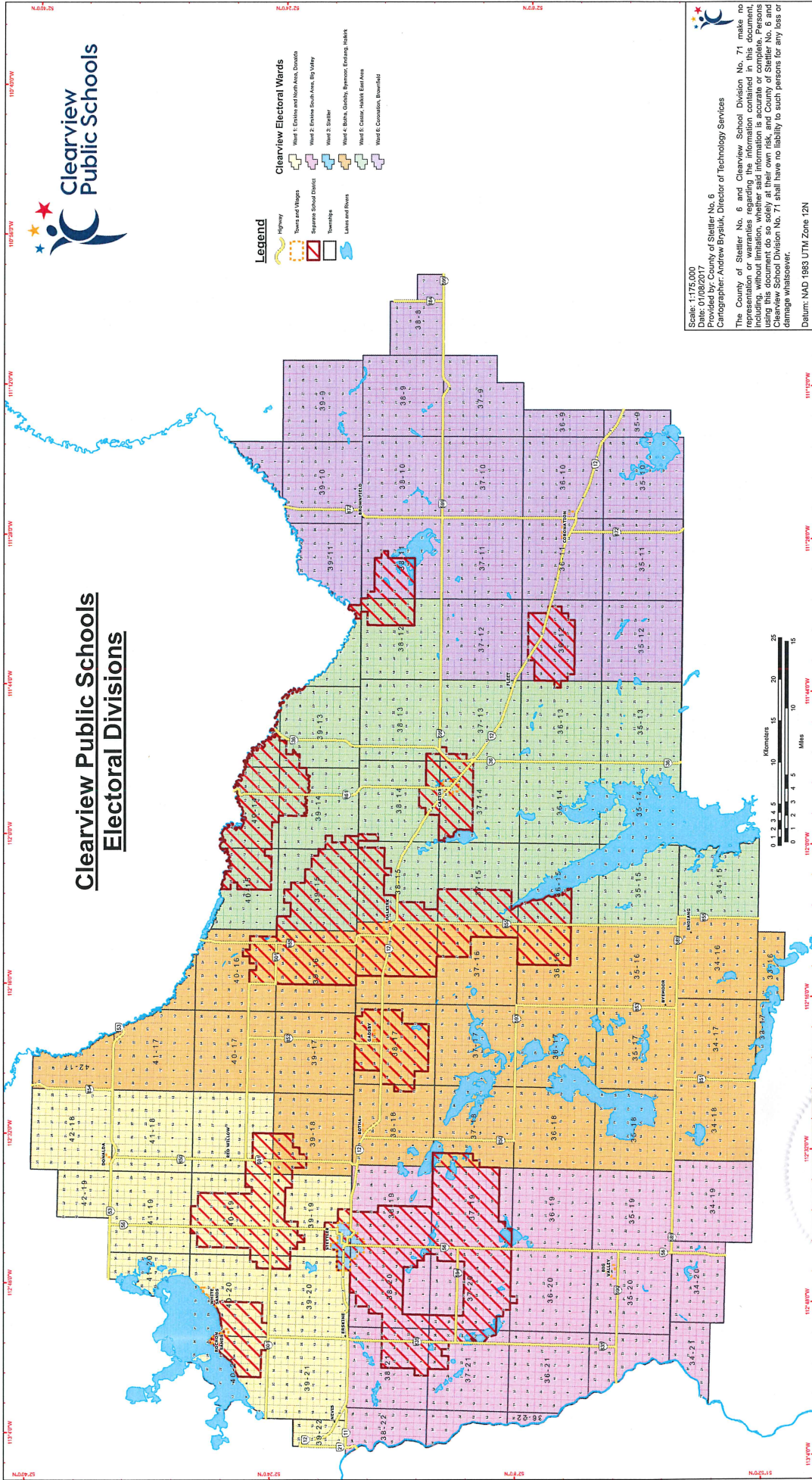
Robert Dault
Secretary Treasurer

G:\WPDOCS\BOB\BY-LAW1.97

I hereby certify this to be a true copy of the original. Dated this 12th day of January, 1998.

Robert Dault
Secretary Treasurer





Clearview Public Schools Electoral Divisions



Legend

- Highway
- Towns and Villages
- Separate School Districts
- Parishes
- Lakes and Rivers

Clearview Electoral Wards

- Ward 1: Esthlin and North Area, Donohoe
- Ward 2: Esthlin South Area, Big Valley
- Ward 3: Seltzer
- Ward 4: Bains, Gully, River, Esthlin, Haskin
- Ward 5: Center, Hill, East Area
- Ward 6: Concession, Bowfield

Scale: 1:175,000
 Provided by: County of Stettler No. 6
 Cartographer: Andrew Bysluk, Director of Technology Services

The County of Stettler No. 6 and Clearview School Division No. 71 make no representation or warranty, expressed or implied, as to the accuracy of the information included in this document, whether said information is accurate or complete. Persons using this document do so solely at their own risk, and County of Stettler No. 6 and Clearview School Division No. 71 shall have no liability to such persons for any loss or damage whatsoever.

Datum: NAD 1983 UTM Zone 12N

